

# FungiXpert<sup>®</sup>

**Cryptococcal Capsular Polysaccharide Detection  
Lateral Flow Assay**

**Essential screening for cryptococcal antigen in 10 mins**



# Overview

Cryptococcal infection occurs in several parts of the body, most commonly in the central nervous system, lungs, skin, etc. Cryptococcal meningitis stands as a prevalent opportunistic infection in individuals with HIV/AIDS, with estimates suggesting over 220,000 occurrences and around 181,000 fatalities per year globally. [1] This product is used for qualitative or semi quantitative detection of cryptococcal capsular polysaccharide antigen in serum or CSF, aiding in the clinical diagnosis of cryptococcal infections

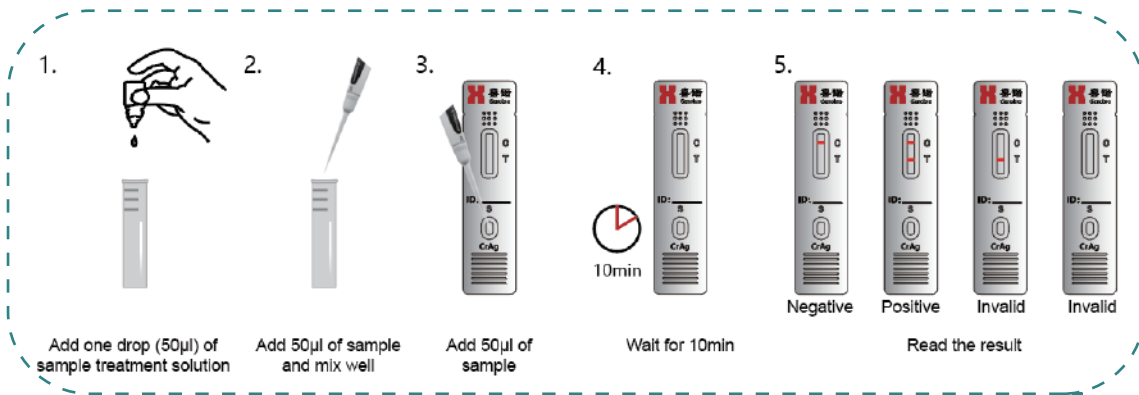
## Product Characteristics

<b>Basic Parameter</b>	<b>Cryptococcal Capsular Polysaccharide Detection K-Set</b>	
<b>Specification</b>	<b>25 Tests/Kit</b>	<b>50 Tests/Kit</b>
<b>Method</b>	<b>Lateral Flow Assay</b>	
<b>Specimen</b>	<b>CSF, Serum</b>	
<b>Detection Time</b>	<b>10 min</b>	
<b>Detection Objects</b>	<b><i>Cryptococcus</i> spp.</b>	
<b>Stability</b>	<b>The K-Set is stable for 2 years at room temperature</b>	

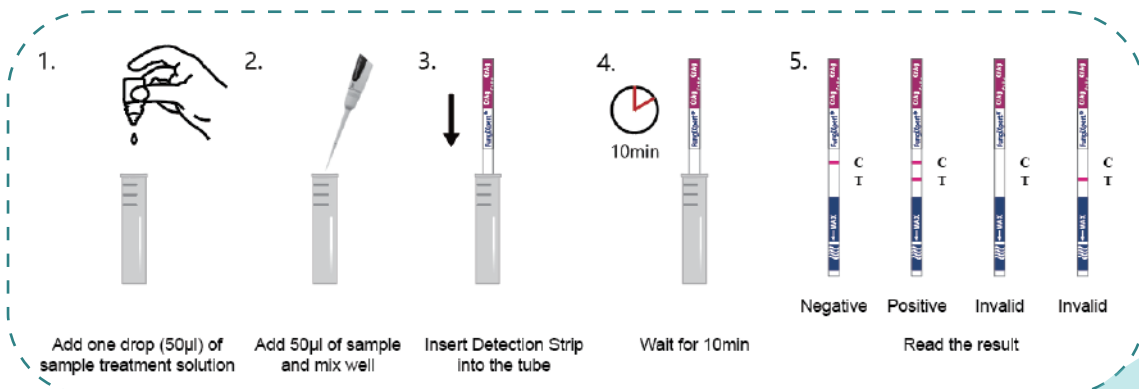
## Operation Method

### ■ For qualitative test

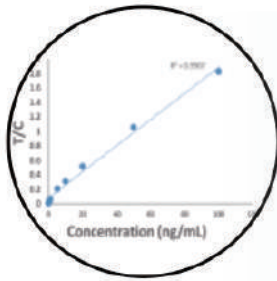
#### Cassette Type (25tests\kit)



#### Strip Type (50tests\kit)



## ■ For quantitative test



ImmunoChromatography Analyzer with built-in standard curve, imported by ID card.

1



Choose corresponding standard curve data, and then test.

2



According to the standard curve and the type of the cassette, the quantitative results were displayed.

3

## Risk Patients

HIV patients

Organ transplant recipients

Diabetes patients

ICU patients

Cancer patients

Leukemia patients

## Assay Advantages

**RAPID:** Obtain result within 10 minutes

**EASY to operate:** Without complex sample pretreatment processing, just 4 steps

**INTUITIVE result:** Visual reading results

**HIGH sensitivity and good specificity**

**EARLY detection:** Reduce drug abuse

## Clinical Performance

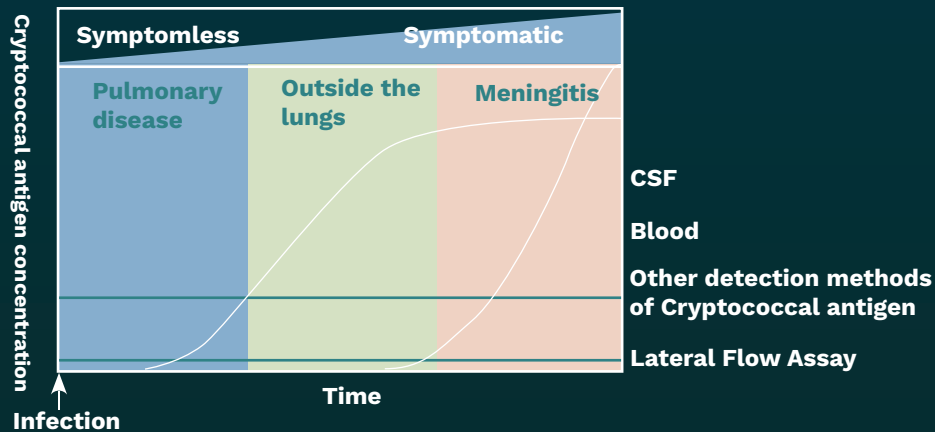
### ■ Low detection limit

The limit of detection is 0.5 ng/ml.

### ■ Sensitivity and specificity

	Serum	CSF
<b>Sensitivity</b>	<b>99.06%</b>	<b>98.77%</b>
<b>Specificity</b>	<b>99.79%</b>	<b>97.42%</b>

### ■ Methodology Comparison



Adapted from Kozel and Bauman, Expert Opin. Med. Diagn. (2012) 6:245

### ■ Cross-reaction analysis

The product does not react with (1-3)- $\beta$ -D-glucan, *Candida albicans* mannan, *Aspergillus galactomannan*.

### ■ Detecting all 7 most prevalent pathogenic *Cryptococcus* species

This product can detect all the *Cryptococcus* serotypes, the corresponding serotypes are *Cryptococcus neoformans* (serotypes A&D) and *Cryptococcus gattii* (serotypes B&C), respectively.[2]

### ■ Order Information

Product Name	REF #	Test Volume
Cryptococcal Capsular Polysaccharide Detection K-Set(Lateral Flow Assay)	FCrAg025-001	25 tests/kit
Cryptococcal Capsular Polysaccharide Detection K-Set(Lateral Flow Assay)	FCrAg050-001	50 tests/kit

[www.era-bio.com](http://www.era-bio.com)

LINKEDIN: @Era Biology

E-MAIL: [marketing@era-bio.com](mailto:marketing@era-bio.com)



ADDRESS: Tianjin: 2-1, 2, 3-101, No. 2 Zone, Binlv

Industrial Park, Binhai Tourism Area, Binhai New Area, Tianjin, P.R. China

NOTICE: This flyer is for reference purposes only and is subject to change without notice.

VERSION: June, 2024

